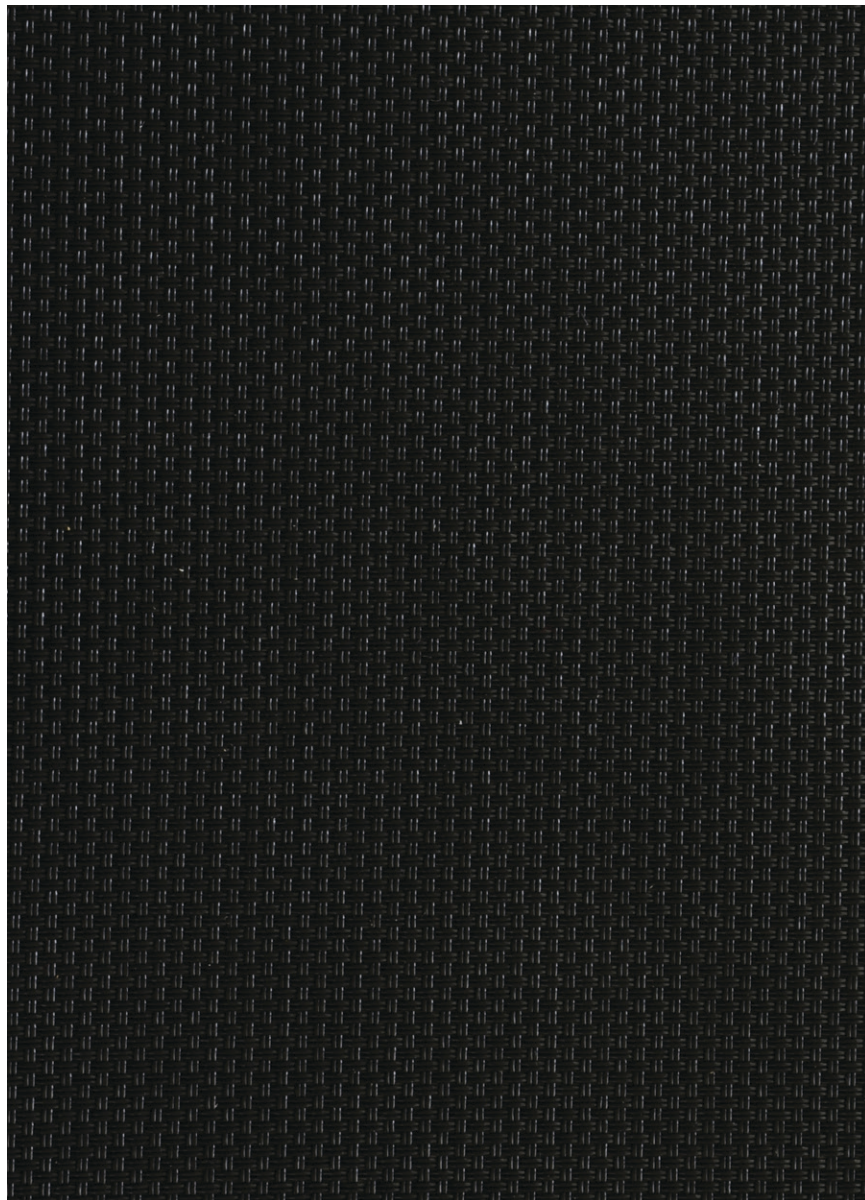




**TEXTILENE® 95**  
BRAND FABRIC

The original  
all-weather fabric.

TEXTILENE® 95 is a durable synthetic fabric made of PVC coated polyester. Designed to reduce heat transfer and solar glare, our fabric can lower overall energy cost and protect indoor furnishings. Flame and fade resistant, it is an excellent choice for a variety of indoor or outdoor uses.



Due to the technical limitations of digital cameras and inconsistencies of display monitors, the characteristics and colors of the fabrics seen on your screen may be slightly different than the actual product.

\*Custom colors and widths available. Minimum order of 1000 yards. Upcharges may apply.  
\*\* Available in 28 linear yard rolls.

## Specifications



**REACH Compliant:** Regulated by Registration, Evaluation, Authorization and Restriction of Chemicals. REACH places greater responsibility on industry to manage the risks that chemicals may pose to human health and the environment.

**Children's Toy Act:** Does not contain harmful phthalates listed under Section 108 of the Consumer Product Safety Improvement Act of 2008 (CPSIA).

**Fire Classification:** Passes California U.S. Title 19 (small scale), NFPA701-2015 TM#1 (small scale), NFPA 101 (Class A Rating), UBC (Class 1), BS 5867 2008 Part 2 Type B Performance, NFPA 701 TM #2 (large scale), and CAN/ULC-S 109-03 (large and small scale).

**Environmental Certification:** GREENGUARD gold certified. Acceptable for use in environments such as schools and healthcare facilities. Complies with requirements of the State of California's Department of Public Health "Standard Method for Testing and Evaluation of Volatile Organic Chemical Emissions from Indoor Sources Using Environmental Chambers, Version 1.1 (2010)" (also known as California Section 01350).

**RoHS Compliant :** Free of Lead (Pb), Cadmium (Cd), Mercury (Hg), Hexavalent chromium (Hex-Cr), Polybrominated biphenyls (PBB), and Polybrominated diphenyl ethers (PBDE).

**Bacteria and Fungal Resistance:** Passes ASTM E 2180, ASTM G21. Includes specially formulated antimicrobial.

## Technical Data

Item Number: T18A2

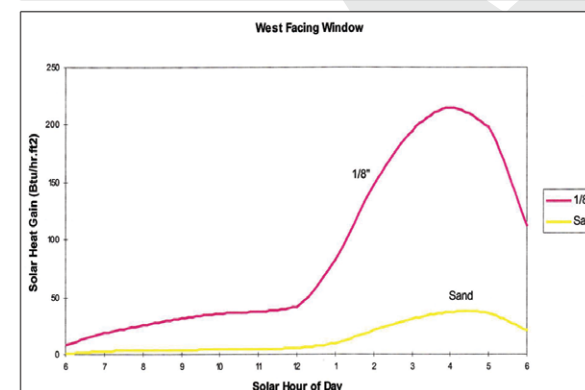
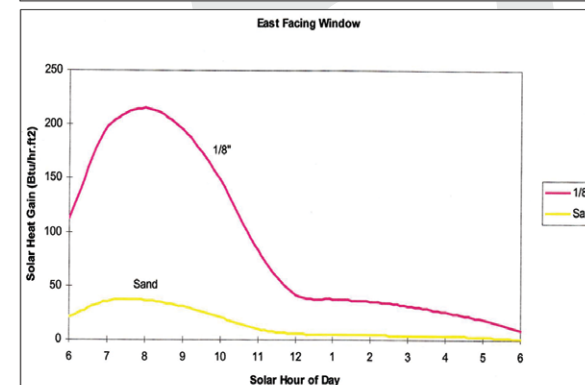
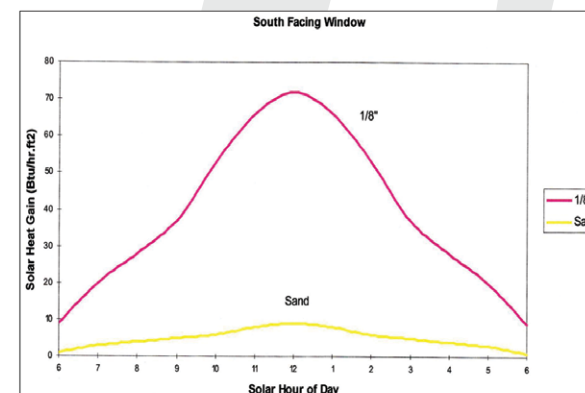
**Product Description:** A fabric using .018" diameter vinyl coated 500 denier polyester core yarns woven in the warp and fill direction.

Attribute	ASTM	Warp	Fill	Typical
Construction, end/inch	D3775-12	36.0 ±0.5	26.0 ±0.5	
Weight, oz/yd <sup>2</sup>	D3776-09	-	-	17.8
Weight, g/m <sup>2</sup>	D3776-09	-	-	603.5
Tensile Strength (grab), lbf / daN	D5034-09	569.8 / 253.5	467.9 / 208.1	
Tensile Strength (strip), lbf / daN	D5035-11	314.9 / 140.1	224.1 / 99.7	
Tear Strength (trapezoidal), lbf / daN	D5733	87.6 / 39.0	57.4 / 25.5	
Elongation, %	D5035-11	32.3	24.9	
Abrasion Resistance (CS10/500 cycles with no added weight)	D3884-09		No exposure of core yarn	
Flammability Rating			CSA Title 19 & NFPA 701	
Weatherability, 1200 hours	G154		Trace discoloration	
Mildew Resistance	G21-13		No growth	
Thickness, inches/mm	D1777-96			0.037" / 0.9398mm

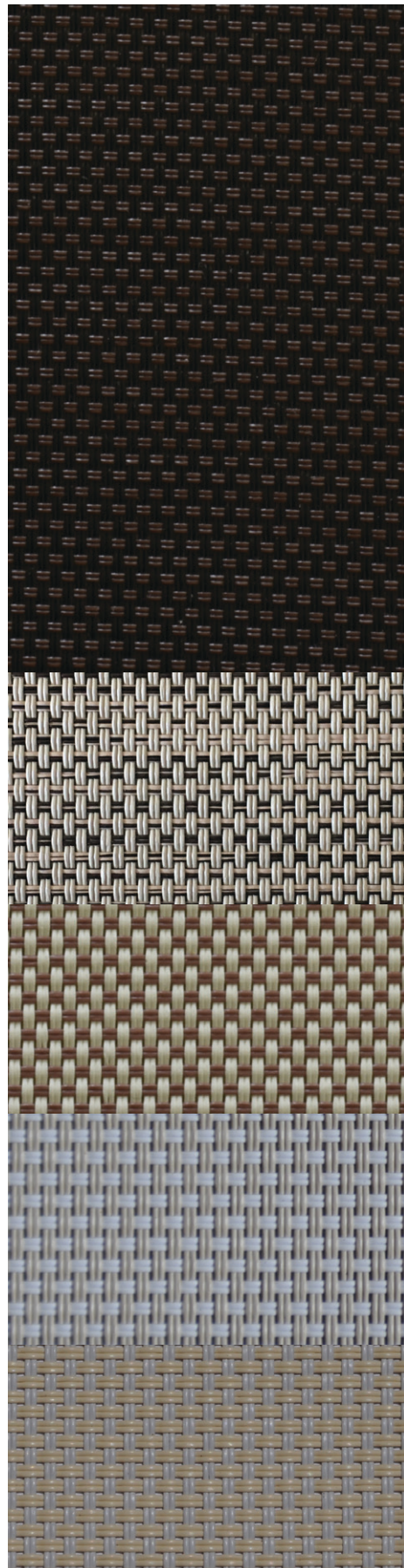
The above results are a representation of real data from single test samples. Presently no specification is incorporated.

### Fenestration Properties for Twitchell Shade Material Exterior Use - 45 Degree Profile Angle

Description	Color	Total Solar			Visible			Single Glass			Insulating Glass		
		Ts	Rs	As	Tv	Rv	Av	1/8" Clr.	1/4" Clr.	1/4" H.A.	1/2" Clr.	1" Clr.	1" H.A.
Textilene 95	Black	5	4	91	8	4	88	0.16	0.16	0.15	0.11	0.11	0.11







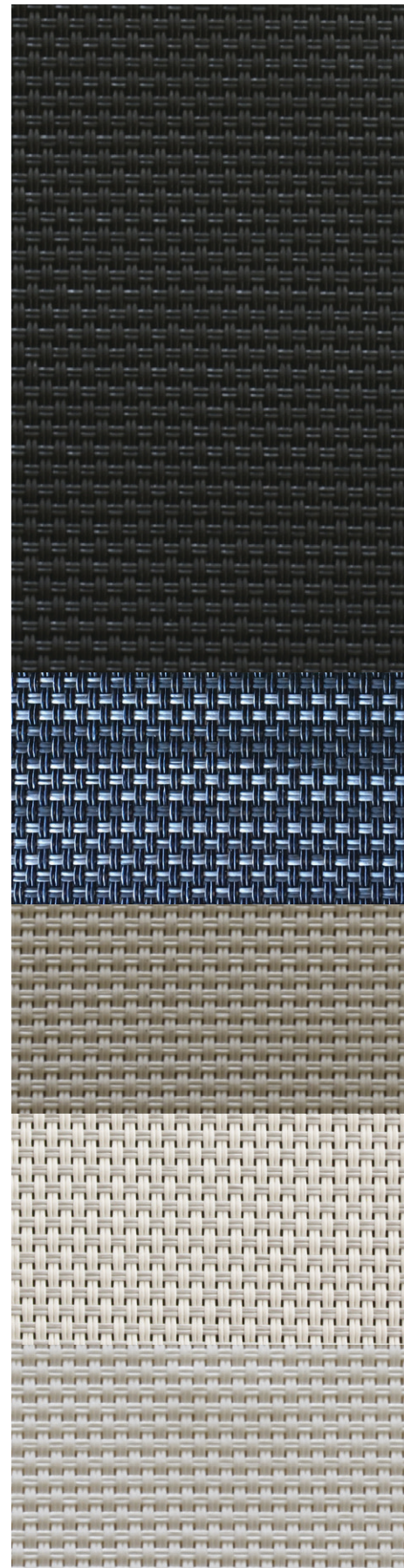
Tobacco Leaf  
T18A2T003 x 120"

Tumbleweed Texture  
T18A2T012 x 120"

Almond Brown  
T18A2T005 x 120"

Mushroom  
T18A2T001 x 120"

Putty  
T18A2T002 x 120"



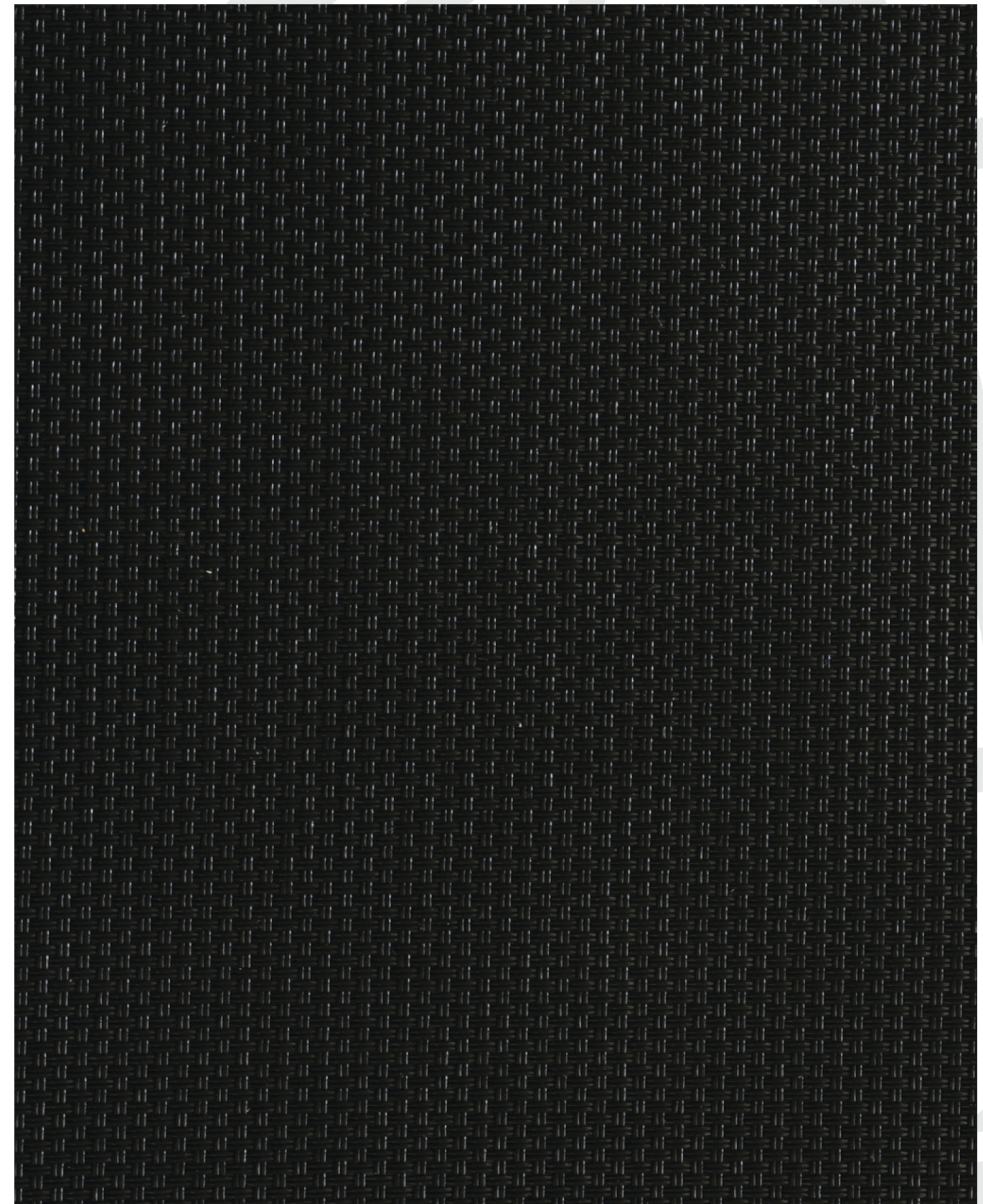
Graphite  
T18A2S003 x 120"

Carbon Texture  
T18A2T013 x 120"

Quartz  
T18A2S002 x 120"

Pewter  
T18A2T004 x 120"

Pure White  
T18A2S004 x 120"



Galaxy Black T18A2S001 x 120"

120" = 304.8 cm