

# PHIFER

EXTERIOR SUN CONTROL  
FABRIC

SUNTEX® 95

---

WEAVING  
EXCELLENCE  
WITH  
INNOVATION



# SunTex® 95

BY PHIFER

Color	SOLAR OPTICAL PROPERTIES				SHGC/G VALUE g-tot (glass & blind)					
	TS	RS	AS	TV	SINGLE			INSULATING		
					1/8 CL	1/4 CL	1/4 HA	1/2 CL	1 CL	1 HA
<b>SUNTEX® 95 30 Degree Profile Angle • Fabrics Installed Externally</b>										
Carbon	6	11	83	8	0.14	0.14	0.13	0.11	0.11	0.10
Stucco	13	49	38	11	0.16	0.15	0.14	0.13	0.13	0.11
White	16	70	14	16	0.16	0.16	0.15	0.14	0.13	0.11
White/Grey	11	54	35	12	0.13	0.13	0.12	0.11	0.11	0.10
Sand	12	45	43	12	0.15	0.15	0.14	0.13	0.12	0.11
Alpaca	10	39	51	11	0.14	0.14	0.13	0.11	0.11	0.11
Chestnut	10	38	52	12	0.14	0.14	0.13	0.12	0.11	0.11
Mocha	6	22	72	9	0.13	0.12	0.12	0.10	0.10	0.09
Dark Bronze	7	5	88	11	0.15	0.15	0.15	0.12	0.11	0.11
Black	7	3	90	10	0.16	0.15	0.15	0.12	0.11	0.11
<b>SUNTEX® 95 60 Degree Profile Angle • Fabrics Installed Externally</b>										
Stucco	11	61	28	11	0.11	0.11	0.11	0.09	0.08	0.08
<b>SUNTEX® 95 75 Degree Profile Angle • Fabrics Installed Externally</b>										
Carbon	1	36	63	4	0.07	0.07	0.07	0.05	0.04	0.04
White	13	82	5	16	0.08	0.08	0.08	0.05	0.05	0.05
White/Grey	7	66	27	12	0.07	0.07	0.07	0.04	0.04	0.04
Sand	8	66	26	12	0.07	0.07	0.07	0.04	0.04	0.05
Alpaca	6	50	44	11	0.08	0.08	0.08	0.05	0.05	0.05
Chestnut	8	49	43	12	0.09	0.09	0.09	0.06	0.06	0.06
Mocha	2	26	72	9	0.09	0.09	0.09	0.06	0.06	0.06
Dark Bronze	1	9	90	11	0.10	0.10	0.10	0.07	0.07	0.07
Black	1	8	91	10	0.10	0.10	0.10	0.07	0.07	0.07



PRODUCT CERTIFIED FOR  
LOW CHEMICAL EMISSIONS  
UL.COM/GG  
UL 2818



Microban® antimicrobial protection inhibits the growth of stain-causing bacteria, mold and mildew on the shade.



MIF Seal of Approval



TS = Solar Transmittance  
RS = Solar Reflectance  
AS = Solar Absorptance  
TV = Visual Transmittance

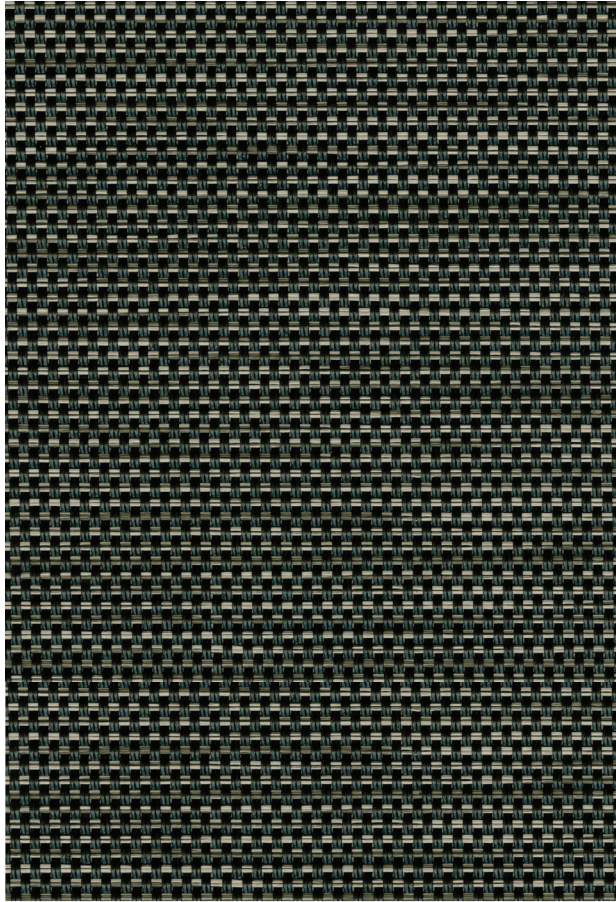
SHGC = Solar Heat Gain Coefficient

1/8 CL = 1/8" Clear Glass  
1/4 CL = 1/4" Clear Glass  
1/4 HA = 1/4" Heat Absorbing Glass  
1/2 CL = 1/2" Insulating Clear Glass  
1 CL = 1" Insulating Clear Glass  
1 HA = 1" Insulating Heat Absorbing Glass

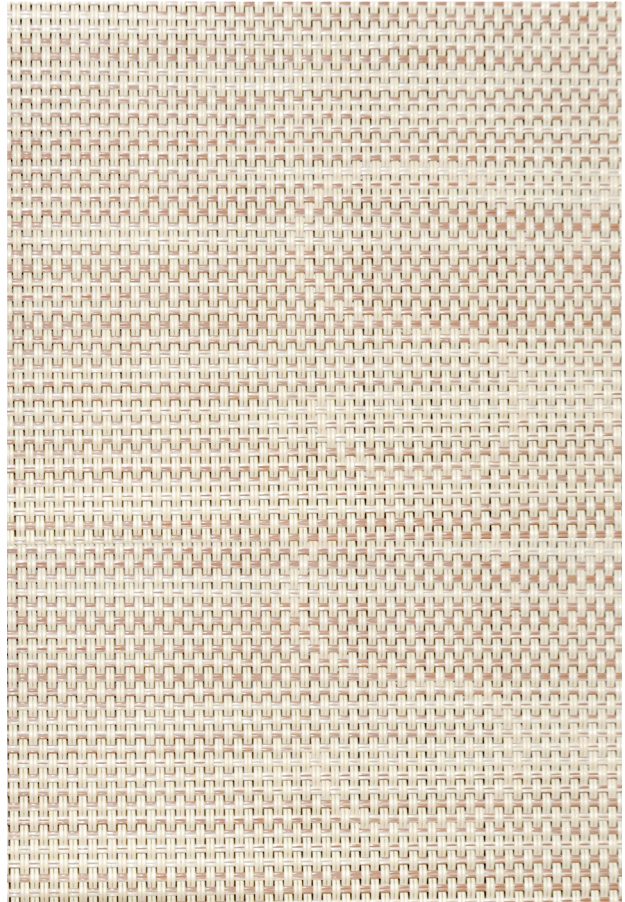
The solar optical properties are used to calculate the solar heat gain coefficient (SHGC). The SHGC represents the percentage of solar heat gain that is transmitted to the interior through the glass and shading system. Dark colors provide maximum glare reduction and visibility.

For additional performance values, test references and technical definitions visit us at [www.phifer.com](http://www.phifer.com).

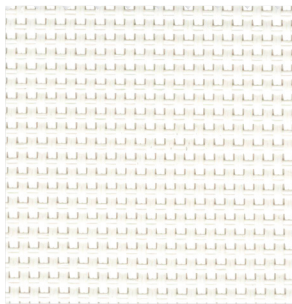
Carbon



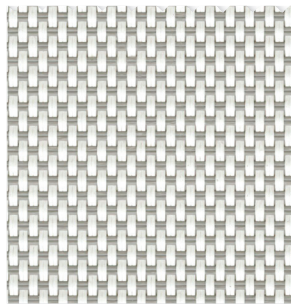
Stucco **NEW**



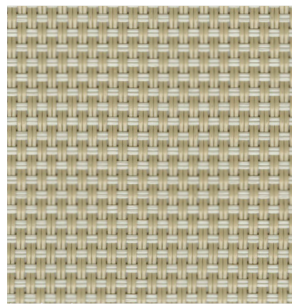
White



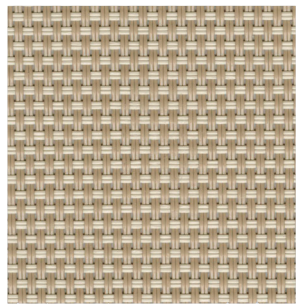
White/Grey



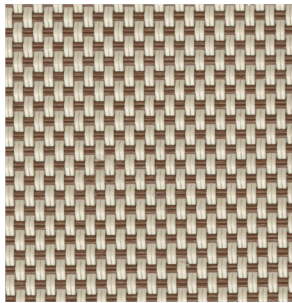
Sand



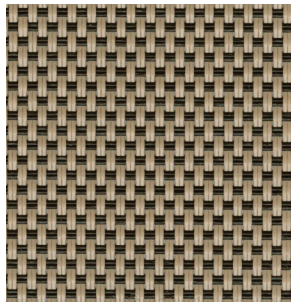
Alpaca



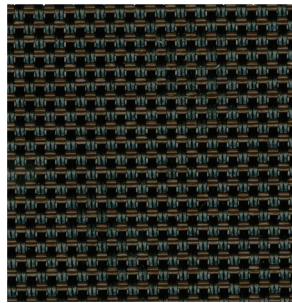
Chestnut



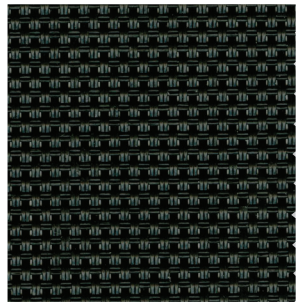
Mocha



Dark Bronze



Black



\*Colors may vary based on individual computer settings and should only be used for general reference.

# SUNTEX 95 SPECIFICATIONS

SunTex 95, engineered for exterior roller shade applications, is a full basketweave vinyl-coated polyester fabric that is thinner and lighter weight than traditional SunTex. SunTex 95 also offers increased heat and glare control as well as daytime privacy.

<b>FIRE CLASSIFICATION</b>	California Technical Bulletin 117-2013 Section 1 IBC Section 803.1.1 (Class A Rating)	CAN/ULC-S 109-03 (large scale) NFPA 101 (Class A Rating)
<b>BACTERIA AND FUNGAL RESISTANCE</b>	ASTM E 2180 Includes Microban antimicrobial additives	ASTM G21
<b>ENVIRONMENTAL CERTIFICATION</b>	GREENGUARD Certified to these standards for low chemical emissions into indoor air during product usage	GREENGUARD Gold
<b>LEAD FREE</b>	RoHS/Directive 2002/95/EC ANSI/WCMA A 100.1-2007 for lead content US Consumer Product Safety Commission Section 101 REACH (EC 1907/2006) compliant	
<b>WARRANTY</b>	10-year exterior	
<b>UV PROTECTION</b>	Seal of Approval by the Melanoma International Foundation (MIF) for effectiveness in preventing sun damage to the skin or eyes	

## SUNTEX 95

---

<b>WIDTHS</b>	126" 320 cm
<b>ROLL LENGTH</b>	90 Linear Feet 27.43 m
<b>COMPOSITION</b>	28% Polyester, 72% Vinyl on Polyester
<b>MESH WEIGHT</b>	15.4 oz/yd <sup>2</sup> 522.15 g/m <sup>2</sup>
<b>FABRIC THICKNESS</b>	0.029 in 0.737 mm
<b>OPENNESS FACTOR</b>	Approximately 5%
<b>UV BLOCKAGE</b>	Approximately 95%
<b>BREAKING STRENGTH (LBS)</b>	350 Warp, 235 Fill
<b>STIFFNESS (MG)</b>	520 Warp, 290 Fill



P. O. Box 1700 • Tuscaloosa, Alabama 35403 -1700 USA  
 Phone: 205.345.2120 • FAX: 205.391.0799  
 Toll Free USA/Canada: 1.800.221.5497  
 phifer.com • ISO Registered



© SunTex is a registered trademark of PHIFER INCORPORATED.  
 © MICROBAN is a registered trademark of Microban Products Company.  
 ™ UL, the UL logos and the UL mark are trademarks of UL LLC.  
 © PHIFER INCORPORATED V18 3030867