



**COMMERCIAL 95 340**  
**COMMERCIAL FR 300**  
(SaFRshade)

**TRIVANTAGE**

ORDER. DONE. GOOD CALL.



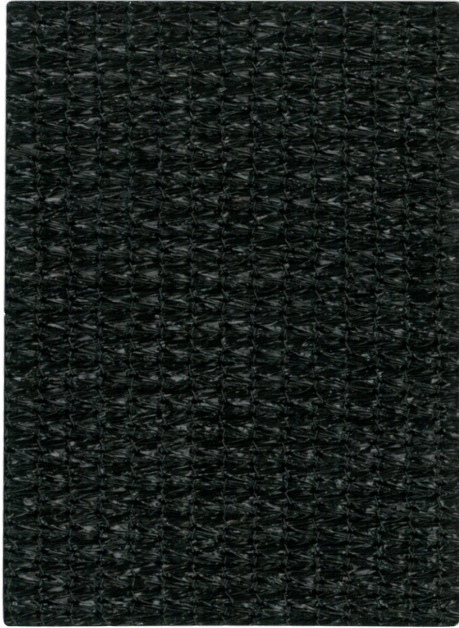
®



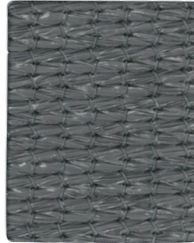
# COMMERCIAL 95 340

An ultraviolet-stabilized HPDE monofilament and tape knitted fabric, Commercial 95 340 was developed specifically for use in fabric structures, awnings and shade covers. Strong and stable, it offers an ideal shade solution for commercial and architectural applications such as school playgrounds, sporting facilities, parking structures, outdoor cafes, car dealerships, outdoor pool areas and more.

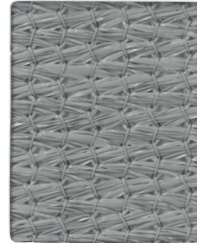
Designed to "breathe," Commercial 95 340 allows cooling breezes to flow through, significantly reducing temperatures beneath. The fabric's knitted, lock-stitch construction prevents tearing and fraying when cut. Colors remain vivid for years. **GREENGUARD®**, **GREENGUARD® Select** and **OEKO-TEX® Certified. 100% lead and phthalate free.**  
FR Standards Met: ASTM E84, Class A



**BLACK**  
865021



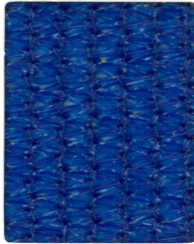
**GUN METAL**  
865039



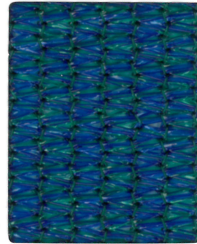
**STEEL GREY**  
865030



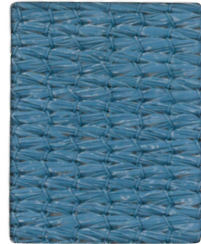
**NAVY BLUE**  
865026



**AQUATIC BLUE**  
865020



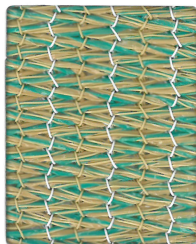
**TURQUOISE**  
865031



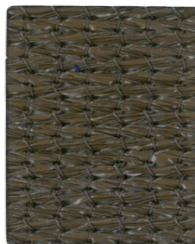
**SKY BLUE**  
865029



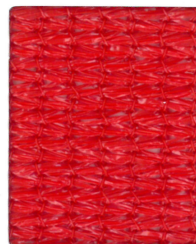
**BRUNSWICK GREEN**  
865022



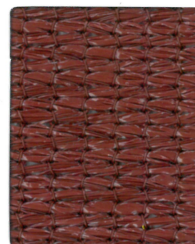
**RIVERGUM GREEN**  
865028



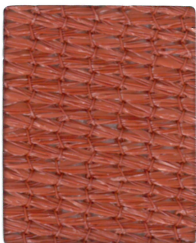
**BROWN**  
865027



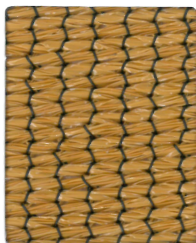
**CHERRY RED**  
865023



**DEEP OCHRE RED**  
865034



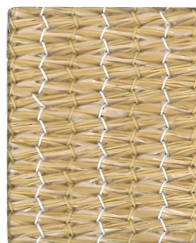
**CAYENNE**  
865033



**CEDAR**  
865035



**YELLOW**  
865032



**DESERT SAND**  
865024



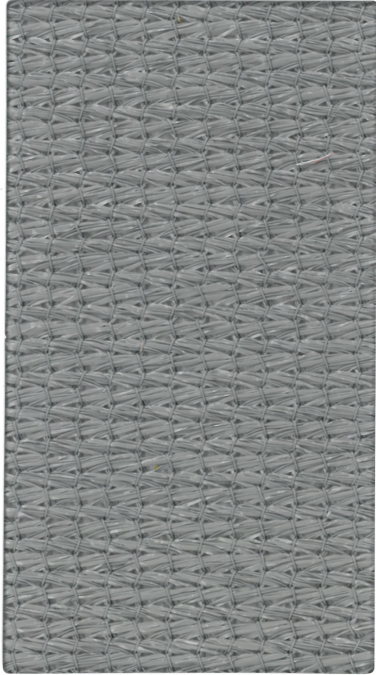
**NATURAL**  
865025

COLORS ARE REPRESENTATIVE ONLY. SMALL VARIATIONS IN SHADE SHOULD BE ANTICIPATED AND ARE WITHIN COMMERCIAL TOLERANCES.

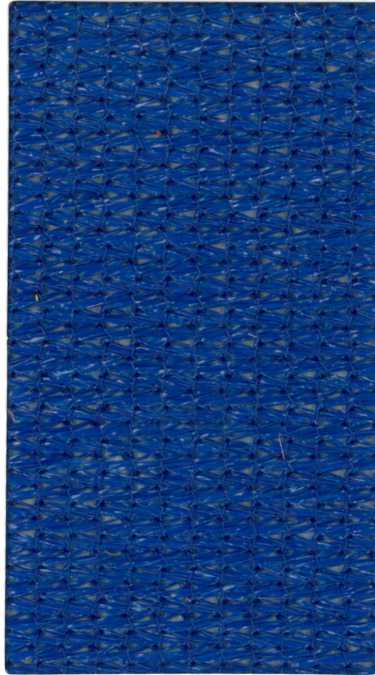


# COMMERCIAL FR 300 (SaFRshade)

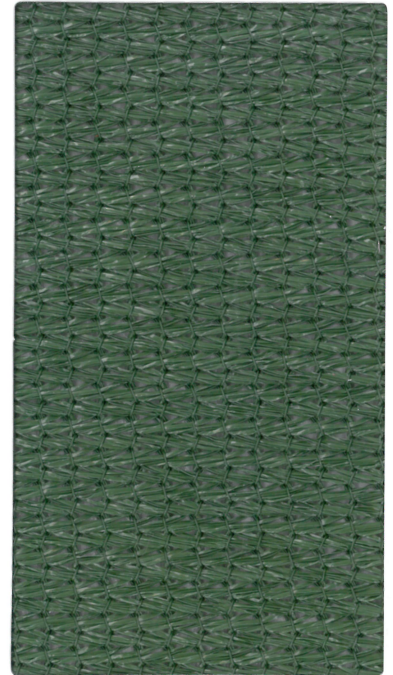
Commercial FR 300 is specifically designed to be the safest choice in architectural shade fabric. Made from UV stabilized HDPE monofilament and tape yarns. Commercial FR 300 has a specialized lock stitch knit for more air movement and better channeling of cool breezes. It is constructed to block up to 95% of harmful UV rays. Commercial FR 300 is recyclable, tear resistant and will not crack, rot or fade and has a 10 year manufacturer's warranty against UV degradation. It is 100% lead and phthalate free. **GREENGUARD® and OEKO-TEX® Certified.**  
FR Standards Met: NFPA 701; ASTM E84, Class A; CSFM Section 13115



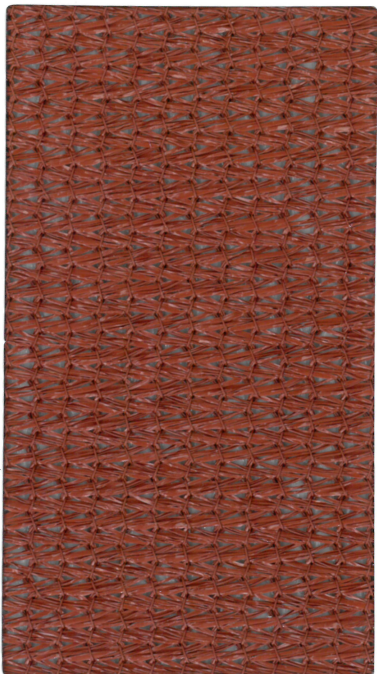
**SLATE GREY**  
865064



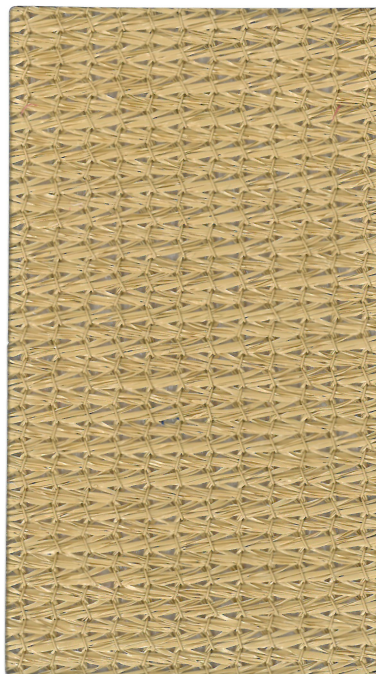
**COBALT BLUE**  
865060



**OLIVE**  
865067



**TERRA COTTA**  
865062



**BEIGE**  
865063



**IVORY**  
865065



**TRIVANTAGE**

ORDER. DONE. GOOD CALL.



**DISTRIBUTION CENTERS: UNITED STATES**

Hayward, CA (800) 786-7607

City of Industry, CA (800) 841-0555

Denver, CO (800) 786-7609

Miami, FL (800) 786-7605

Lithia Springs, GA (800) 786-7606

Elmhurst, IL (800) 786-7608

Maryland Heights, MO (800) 786-7603

Somerset, NJ (800) 786-7602

Mebane, NC (919) 304-6810

Middleburg Heights, OH (800) 786-7601

Irving, TX (800) 786-7610

Tukwila, WA (800) 213-1465

**CANADA**

Trican Corp. (800) 387-2851

[www.tricancorp.ca](http://www.tricancorp.ca)

**MEXICO**

Tunali Tec, Morelos (777) 362-0636

[www.tunalitec.com](http://www.tunalitec.com)

**CORPORATE OFFICE**

1831 North Park Avenue  
Glen Raven, NC 27217-1100  
(800) 786-1876

[www.trivantage.com](http://www.trivantage.com)

GREENGUARD® IS A REGISTERED TRADEMARK OF GREENGUARD ENVIRONMENTAL INSTITUTE. OEKO-TEX® IS A REGISTERED TRADEMARK OF THE OEKO-TEX ASSOCIATION. TRIVANTAGE® IS A REGISTERED TRADEMARK OF GLEN RAVEN, INC.

03/16/16-DW-998981