

AwnTex®

TRIVANTAGE

ORDER. DONE. GOOD CALL.



®

# AwnTex<sup>®</sup>

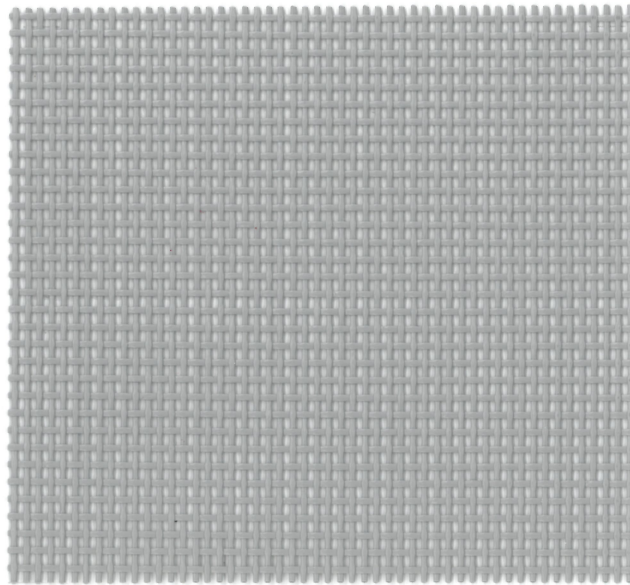
60" / 11.7 oz/sq yd

## AwnTex - 70<sup>®</sup>

AwnTex 70<sup>®</sup> is a 17- by 11-count vinyl polyester mesh fabric. It has an openness factor of 30% and a shade factor of 70%. All backed by 5-year manufacturer's limited warranty. Flame retardant: CSFM, Title 19, NFPA-701 and ASTM E84



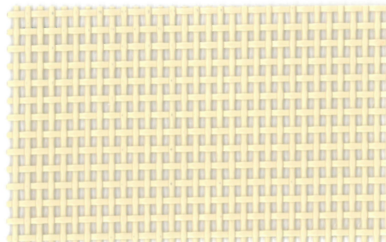
**BLACK**  
863201  
AwnTex 70 #Z81



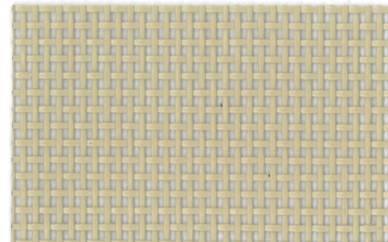
**ASH GRAY**  
863215  
AwnTex 70 #Z24



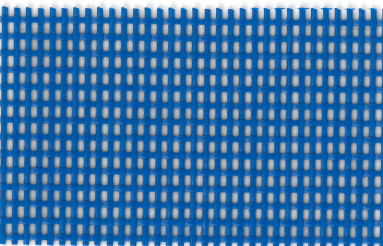
**WHITE**  
863206  
AwnTex 70 #OC2



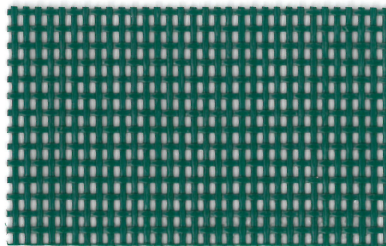
**ALMOND**  
863209  
AwnTex 70 #OF1



**BEIGE**  
863225  
AwnTex 70 #EF1



**ROYAL BLUE**  
863203  
AwnTex 70 #HY0

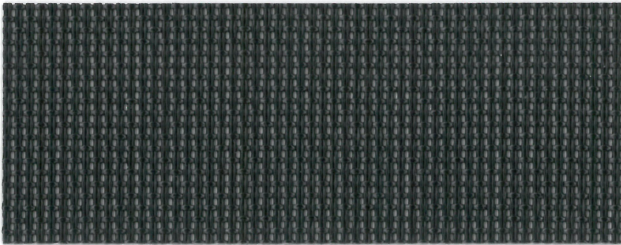


**SPRUCE GREEN**  
863218  
AwnTex 70 #D70

**AwnTex - 160®**

AwnTex 160® fabric provides shade without trapping heat or airflow, making it ideal for awning and umbrella applications. This 36- by 16-count woven polyester mesh fabric is flame retardant and resists UV rays, mildew and rot. AwnTex 160 has an approximate openness of 14.1% and a shade factor of 85.9%. All backed by 5-year manufacturer's limited warranty. Flame retardant: CSFM, Title 19, NFPA-701 and ASTM E84

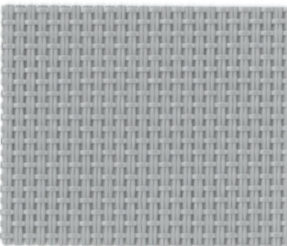
Winter Wheat (863422 #EF5), Dark Brown Tweed (863420 #NX8), and Almond/ Brown Tweed (863421 #NX6) are also available in 98" width.



**BLACK**  
863409  
AwnTex 160 #XMY



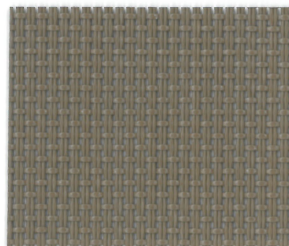
**COAL TWEED**  
863414  
AwnTex 160 #YIF



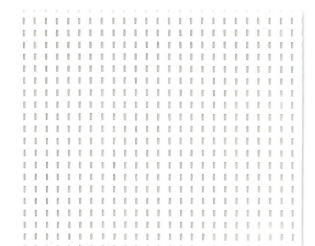
**GRAY**  
863405  
AwnTex 160 #XM2



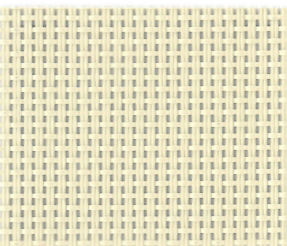
**ASH TWEED**  
863415  
AwnTex 160 #YIE



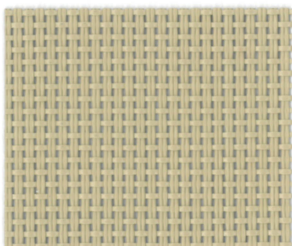
**TAUPE**  
863417  
AwnTex 160 #NX7



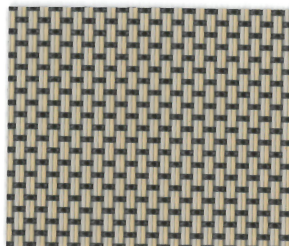
**WHITE**  
863404  
AwnTex 160 #0DY



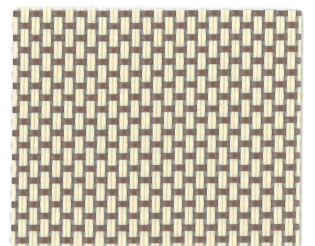
**DESERT TAN**  
863408  
AwnTex 160 #EF8



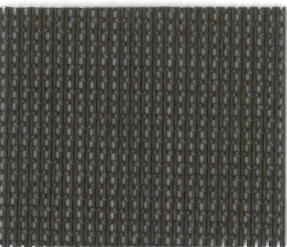
**BEIGE**  
863402  
AwnTex 160 #EF6



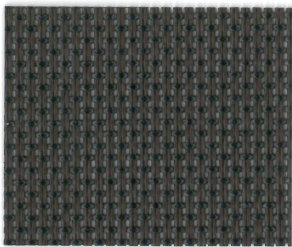
**WINTER WHEAT**  
863400  
AwnTex 160 #EF5



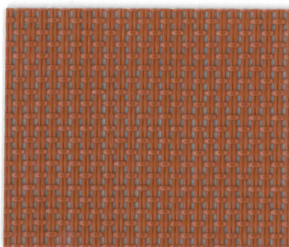
**ALMOND/ BROWN TWEED**  
863418  
AwnTex 160 #NX6



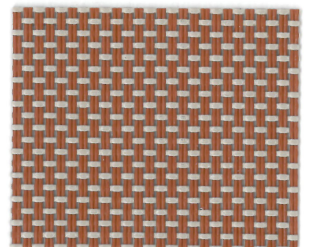
**DARK BROWN**  
863403  
AwnTex 160 #EF7



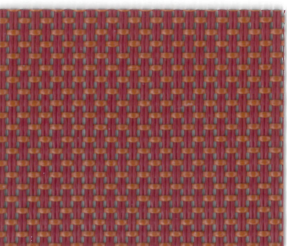
**DARK BROWN TWEED**  
863416  
AwnTex 160 #NX8



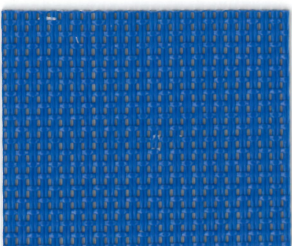
**TERRA COTTA**  
863411  
AwnTex 160 #KAV



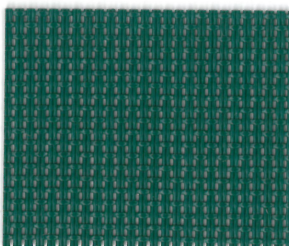
**BRICK TWEED**  
863412  
AwnTex 160 #KAW



**CABERNET TWEED**  
863419  
AwnTex 160 #KAX



**ROYAL BLUE**  
863407  
AwnTex 160 #L42



**DARK GREEN**  
863410  
AwnTex 160 #DM3



**OLIVE TWEED**  
863413  
AwnTex 160 #DBZ

# TRIVANTAGE

ORDER. DONE. GOOD CALL.



## **DISTRIBUTION CENTERS**

### **UNITED STATES**

Hayward, CA (800) 786-7607  
City of Industry, CA (800) 841-0555  
Denver, CO (800) 786-7609  
Miami, FL (800) 786-7605  
Atlanta, GA (800) 786-7606  
Elmhurst, IL (800) 786-7608  
St. Louis, MO (800) 786-7603  
Somerset, NJ (800) 786-7602

Mebane, NC (877) 540-6803  
Cleveland, OH (800) 786-7601  
Dallas, TX (800) 786-7610  
Seattle, WA (800) 213-1465

### **CANADA**

Trican Corp. (800) 387-2851  
[www.tricancorp.ca](http://www.tricancorp.ca)

### **MEXICO**

Tunali Tec, Morelos (777) 362-0636  
[www.tunalitec.com](http://www.tunalitec.com)

## **CORPORATE OFFICE**

1831 North Park Avenue  
Glen Raven, NC 27217-1100  
(800) 786-1876

[www.trivantage.com](http://www.trivantage.com)

AWNTEX® AND TRIVANTAGE® ARE REGISTERED TRADEMARKS OF GLEN RAVEN, INC.  
07/19/17-LED-998857